

Brand ZUCCHETTI

n/a

PAN S

ZPA804.1900

Built-in thermostatic shower mixer, 4 volume controls.



3/4" built-in thermostatic shower mixer with 4 volume controls.
Both vertical and horizontal installation possible.
7,4 GPM @ 43,5 PSI

R96733.1900

Built in part



Brand ZUCCHETTI

n/a

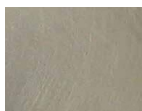
PAN S

ZPA804.1900

Finishes



Chrome



Brushed Nickel

C3



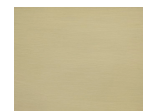
Polished Nickel

C8



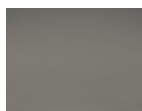
Gold

C40



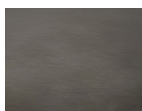
Brushed Gold

C41



Metal Black

C50



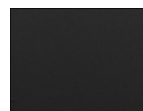
Brushed Metal Black

C51



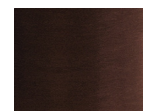
Embossed Matt Black

N1



Matt black

N6



PVD brushed chocolate

P21



Brushed PVD British gold

P31



Brushed total black PVD

P81



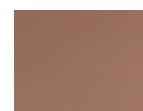
Brushed PVD Copper

P91



Glossy gesso

J3



Pearl cipria

K7



Pearl chili

R6



Pearl salvia

V7



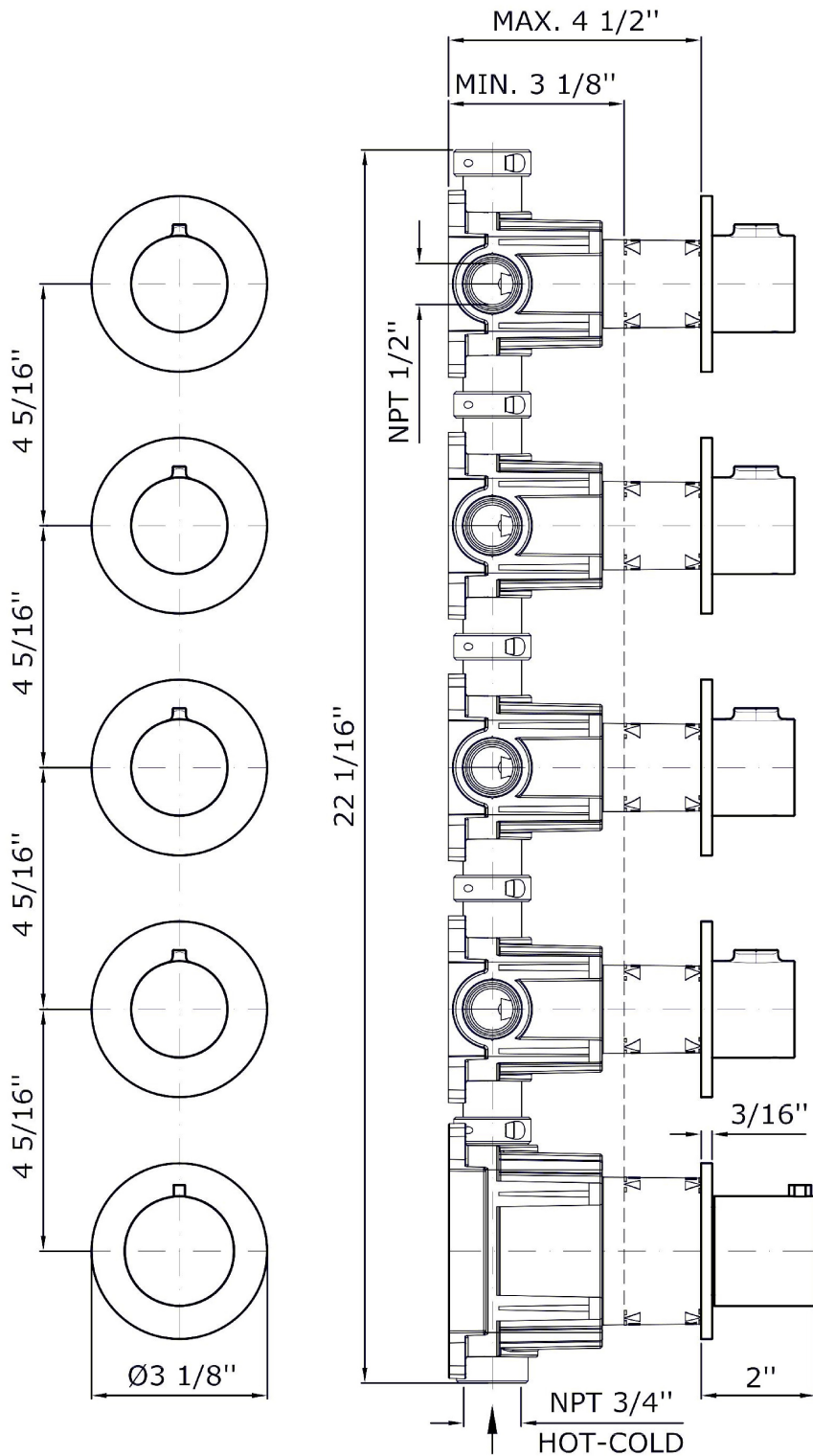
Matt mirto

V8

Note / Notes

PAN S

ZPA804.1900 Overall Drawing



Brand ZUCCHETTI

n/a

PAN S

ZPA804.1900 Weights and Sizes

Weight (lb)	2,95 (Kg)	6,50 (lb)
Volume test (dc3) - (in3)	11,01 (dc3)	671,87 (in3)
h (mm) - (in)	90,00 (mm)	3,54 (in)
L1 (mm) - (in)	335,00 (mm)	13,19 (in)
L2 (mm) - (in)	365,00 (mm)	14,37 (in)

