

SHOWER

Z94266

Soffione a getto fisso, Ø 300 mm. / Ø 300 mm shower head.



Soffione Ø 300 mm in ottone, a getto fisso con sistema anticalcare. Spessore 8 mm. Ispezionabile.
Water Saving - portata d'acqua uguale o inferiore a 9 l/min.

Ø 300 mm brass shower head, with anti-limescale system. 8 mm thickness. Inspectionable.
Water Saving - water flow rate of 9 l/min or less.

SHOWER

Z94266

Finiture / Finishes



Cromo / Chrome



C3

Nickel Spazzolato / Brushed Nickel



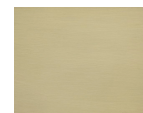
C8

Nickel Lucido / Polished Nickel



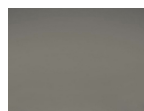
C40

Oro / Gold



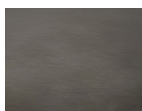
C41

Oro spazzolato / Brushed Gold



C50

Metal Black / Metal Black



C51

Metal Black spazzolato / Brushed Metal Black



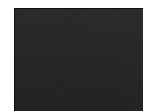
W1

Bianco Opaco Goffrato / Embossed Matt White



N1

Nero Opaco Goffrato / Embossed Matt Black



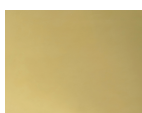
N6

Nero opaco / Matt black



P21

PVD brushed chocolate / PVD brushed chocolate



P30

British Gold PVD / British Gold PVD



P31

Brushed PVD British gold / Brushed PVD British gold



P41

PVD Oro Spazzolato / PVD Brushed Gold



P60

Platino PVD / Platinum PVD



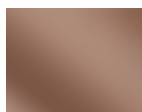
P80

Total black PVD / Total black PVD



P81

Brushed total black PVD / Brushed total black PVD



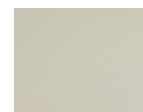
P90

Copper PVD / Copper PVD



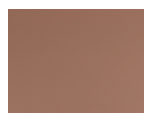
P91

Brushed PVD Copper / Brushed PVD Copper



J3

Glossy gesso / Glossy gesso



K7

Pearl cipria / Pearl cipria



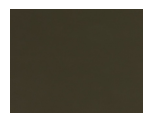
R6

Pearl chili / Pearl chili



V7

Pearl salvia / Pearl salvia



V8

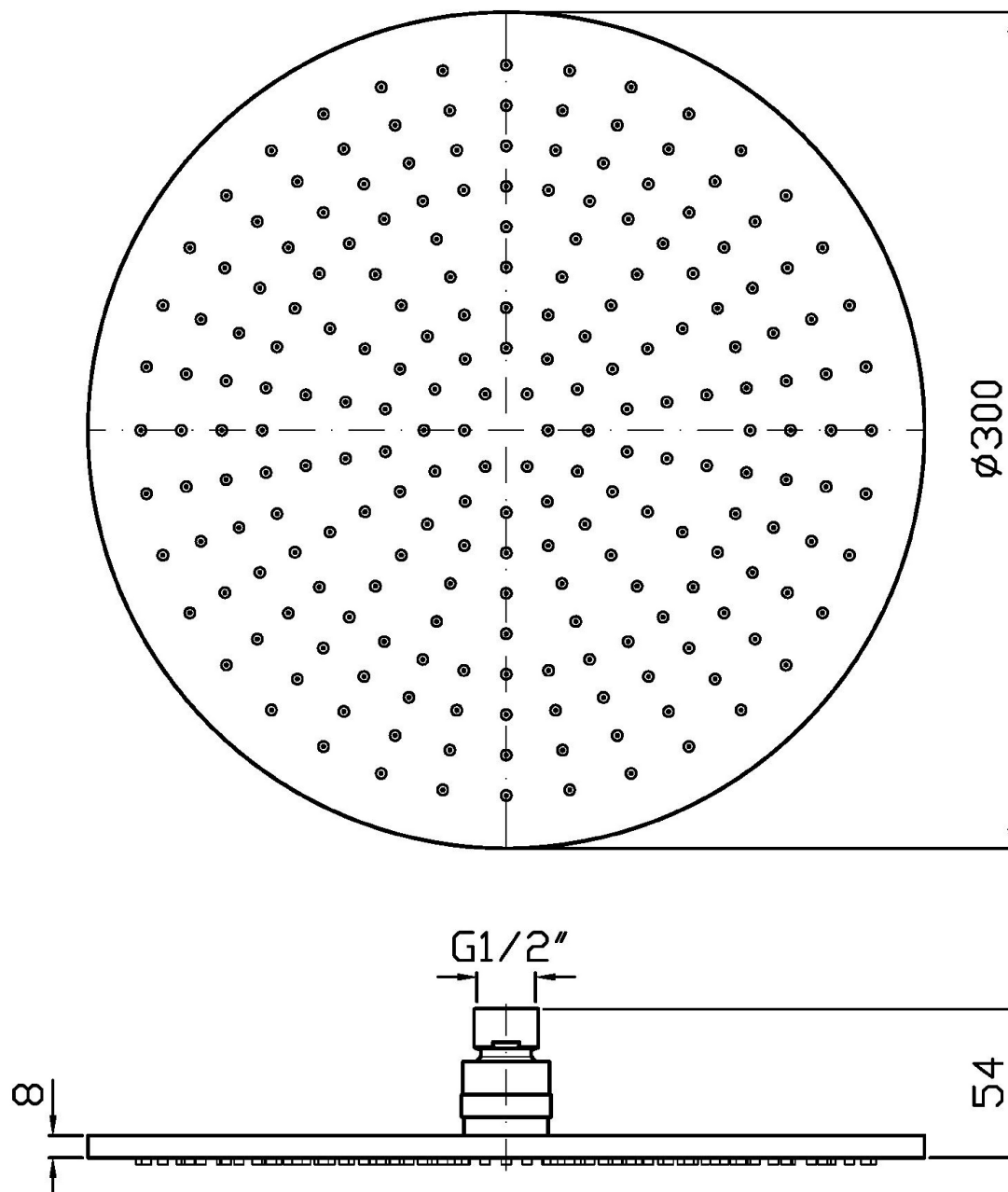
Matt mirto / Matt mirto

Note / Notes

SHOWER

Z94266

Disegno Complessivo / Overall Drawing

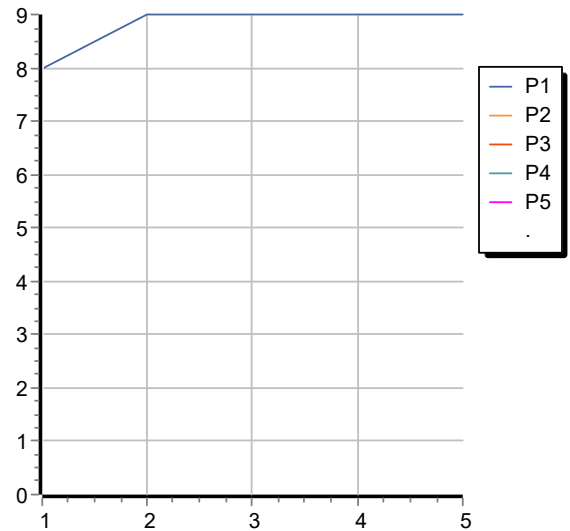


SHOWER

Z94266

Portate / Flowrates (lt/min)

PRESSIONE PRESSURE	1 BAR	2 BAR	3 BAR	4 BAR	5 BAR
P1 SOFFIONE SHOWER HEAD	8	9	9	9	9
P2					
P3					
P4					
P5					



SHOWER

Z94266

Pesi e Misure / Weights and Sizes

Peso (Kg) Weight (lb)	2,00 (Kg)	4,41 (lb)
Volume test (dc3) - (in3)	8,65 (dc3)	527,86 (in3)
h (mm) - (in)	70,00 (mm)	2,76 (in)
L1 (mm) - (in)	315,00 (mm)	12,40 (in)
L2 (mm) - (in)	324,00 (mm)	12,76 (in)

